

Aid Stations

KT
Mile 11.5

Chapman Gulch
Mile 18.1
- Foot access only via parking at Ophir
- Drop Bags

Telluride
Mile 27.8
- Crew Access
- Drop Bags

Krogers Canteen
Mile 32.7

Governor Basin
Mile 36.3

Ouray
Mile 43.9
- Crew Access
- Drop Bags

Engineer
Mile 51.9

Animas Forks
Mile 57.9
- Crew Access
- Drop Bags

Burrows Park
Mile 68.5

Sherman
Mile 72.7
- Crew Access
- Drop Bags

Pole Creek
Mile 82.1

Maggie Gulch
Mile 87.1

Cunningham
Mile 93.2
- Crew Access
- Drop Bags

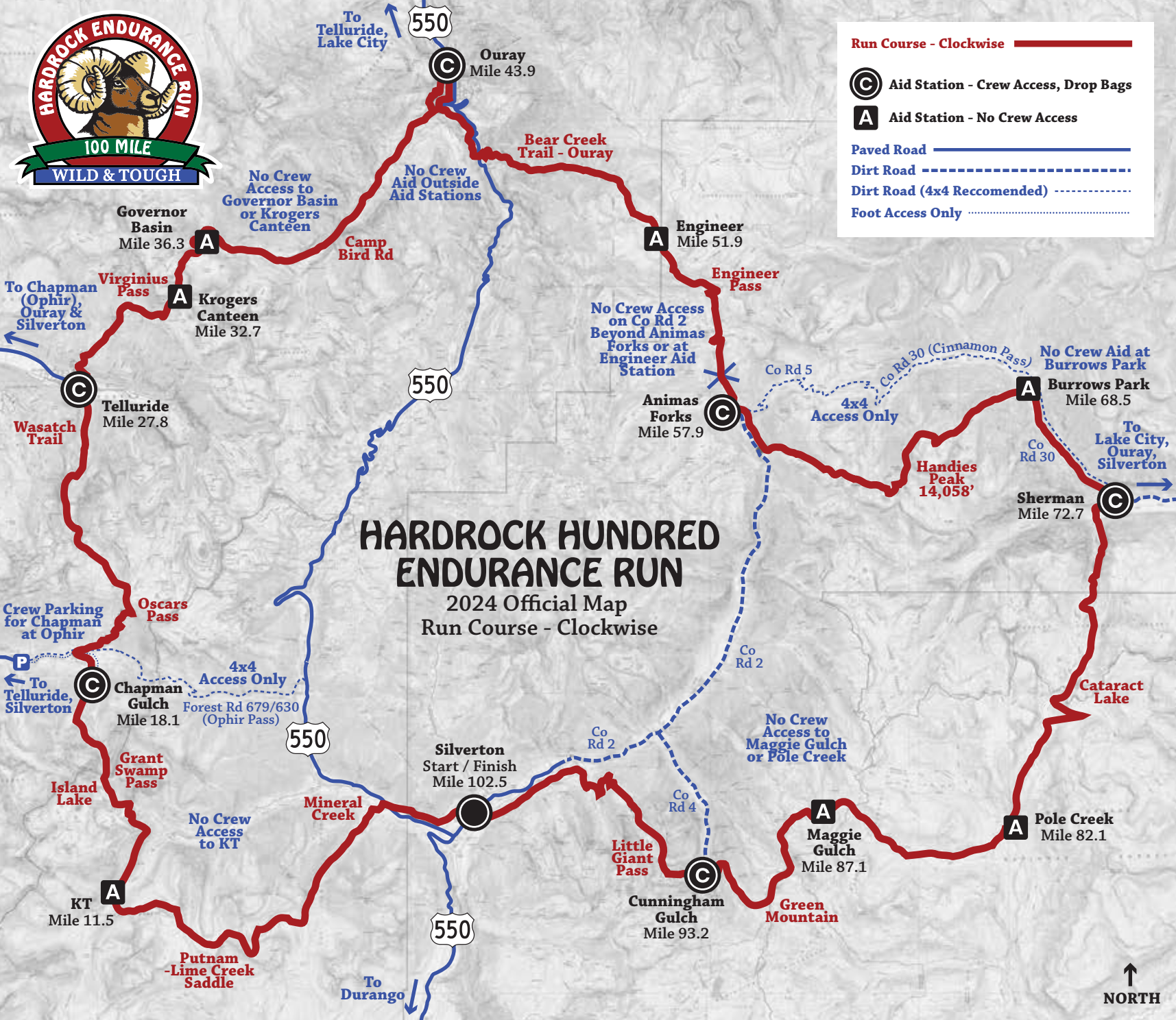




Run Course - Clockwise

- (C)** Aid Station - Crew Access, Drop Bags
- (A)** Aid Station - No Crew Access

Paved Road —————
Dirt Road - - - - -
Dirt Road (4x4 Recommended) ······
Foot Access Only



HARDROCK HUNDRED ENDURANCE RUN

2024 Official Map
Run Course - Clockwise

To Telluride,
Lake City

550

(C) Ouray
Mile 43.9

Bear Creek
Trail - Ouray

No Crew
Access to
Governor Basin
or Krogers
Canteen

No Crew
Aid Outside
Aid Stations

Camp
Bird Rd

(A) Governor
Basin
Mile 36.3

(A) Engineer
Mile 51.9

No Crew Access
on Co Rd 2
Beyond Animas
Forks or at
Engineer Aid
Station

(C) Animas
Forks
Mile 57.9

Co Rd 5

Co Rd 30 (Cinnamon Pass)
4x4
Access Only

No Crew Aid at
(A) Burrows Park
Mile 68.5

To
Lake City,
Ouray,
Silverton

Handies
Peak
14,058'

(C) Sherman
Mile 72.7

Cataract
Lake

No Crew
Access to
Maggie Gulch
or Pole Creek

(C) Silverton
Start / Finish
Mile 102.5

Co Rd 2

Co Rd 4

Little
Giant
Pass

(C) Cunningham
Gulch
Mile 93.2

Green
Mountain

(A) Maggie
Gulch
Mile 87.1

(A) Pole Creek
Mile 82.1

No Crew
Access
to KT

Mineral
Creek

(A) KT
Mile 11.5

Putnam
-Lime Creek
Saddle

Island
Lake

Grant
Swamp
Pass

(C) Chapman
Gulch
Mile 18.1

4x4
Access Only
Forest Rd 679/630
(Ophir Pass)

Oscar's
Pass

Crew Parking
for Chapman
at Ophir

To
Telluride,
Silverton

(C) Telluride
Mile 27.8

Wasatch
Trail

(A) Virginius
Pass

(A) Krogers
Canteen
Mile 32.7

To Chapman
(Ophir),
Ouray &
Silverton

